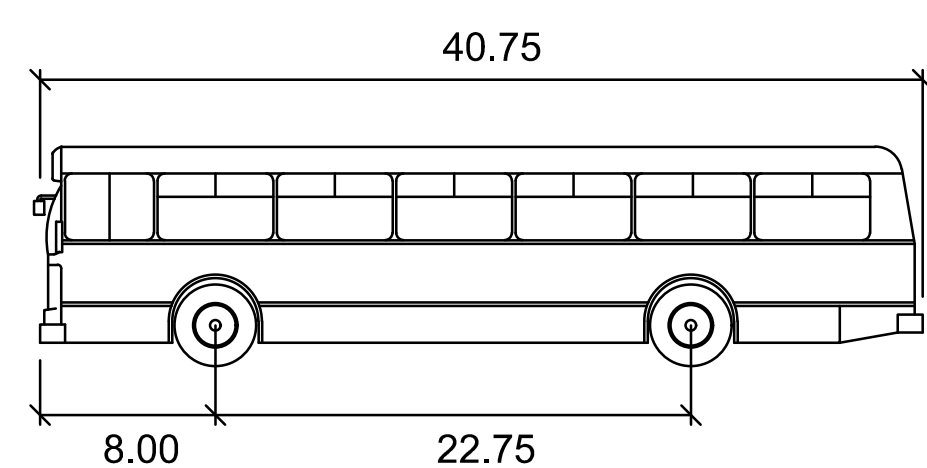


key plan

phase SCHEMATIC DESIGN
date APRIL 1, 2022
project 21004

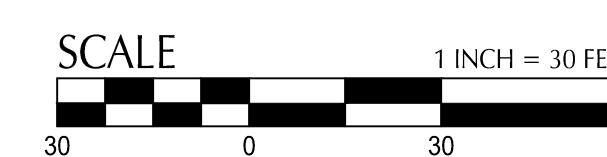
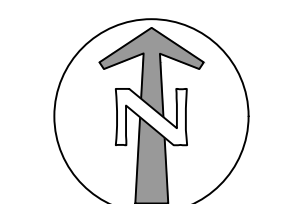
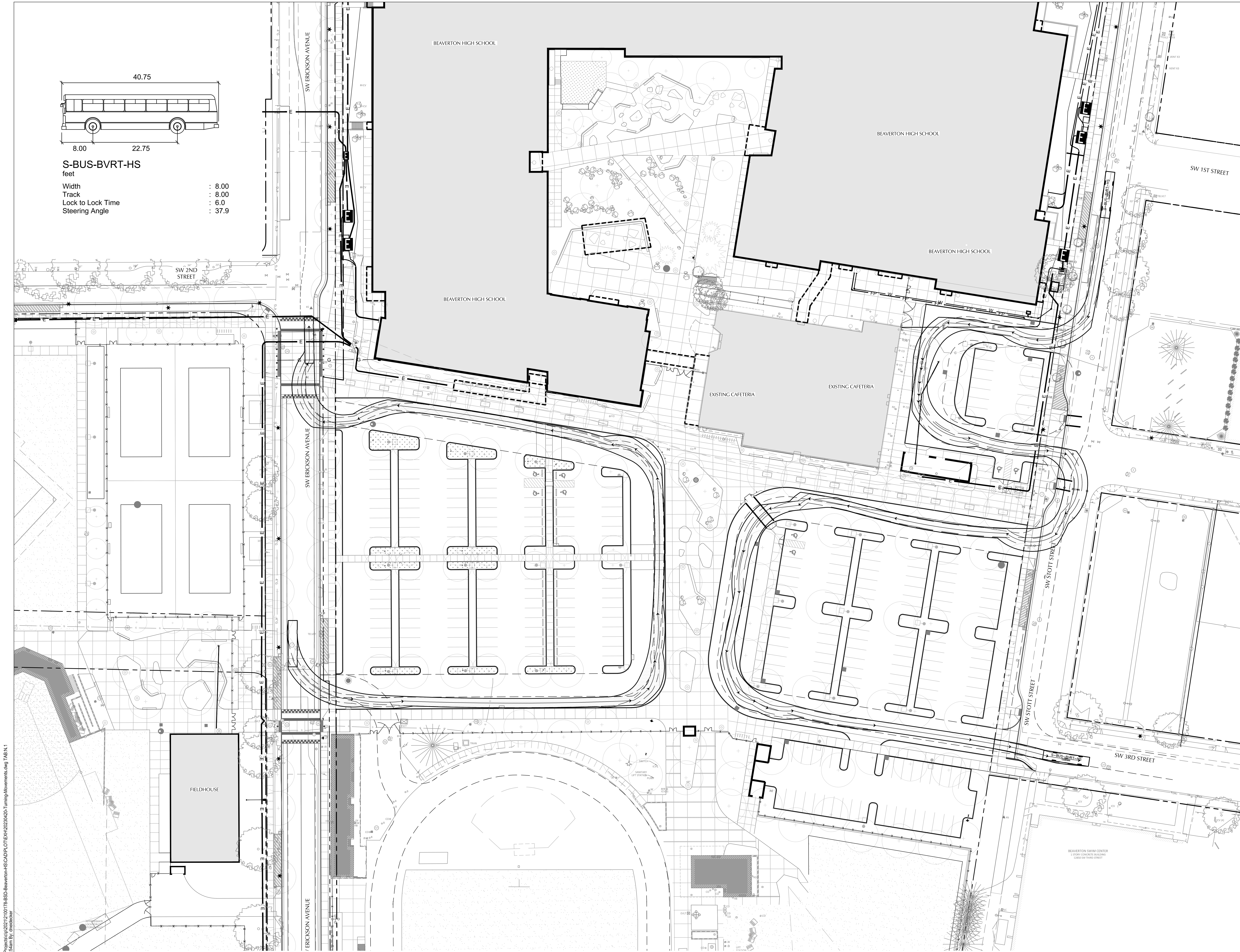
BUS AND WB-67
TURNING MOVEMENTS

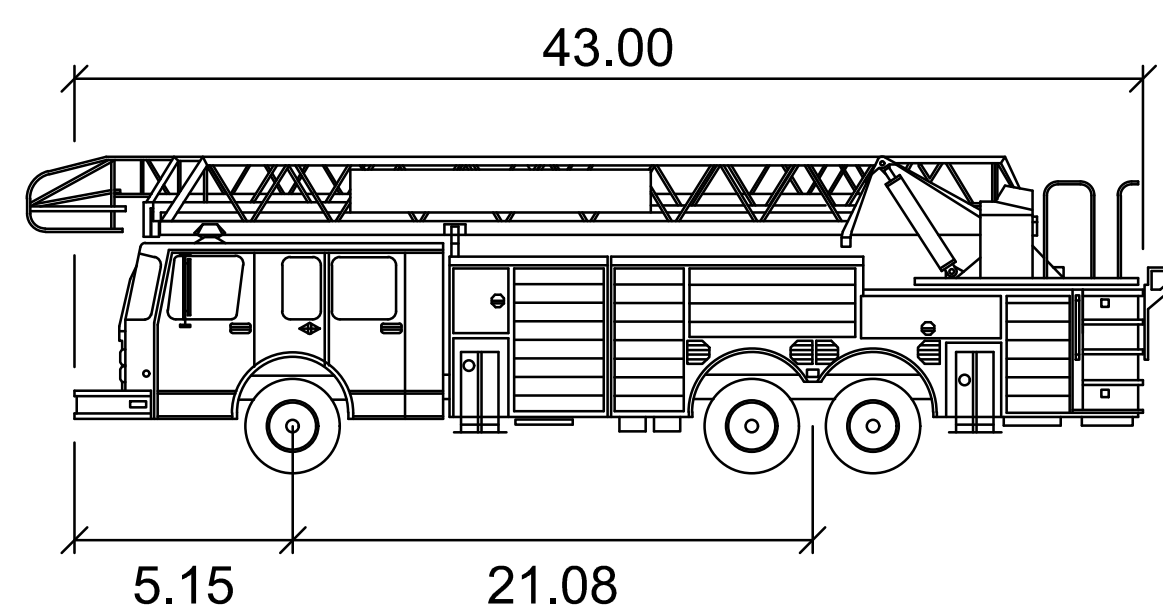
N.1



S-BUS-BVRT-HS
feet

- Width : 8.00
- Track : 8.00
- Lock to Lock Time : 6.0
- Steering Angle : 37.9

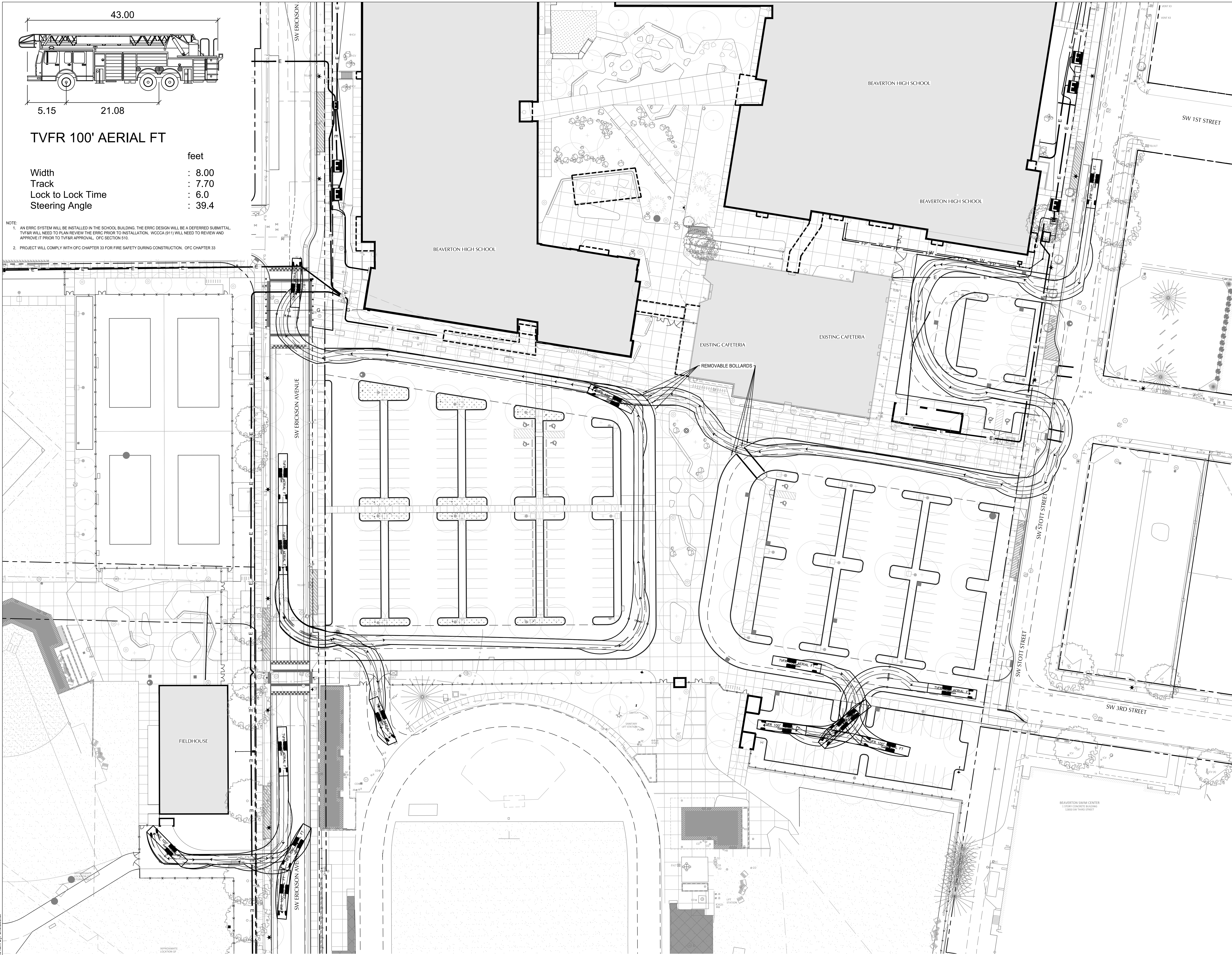




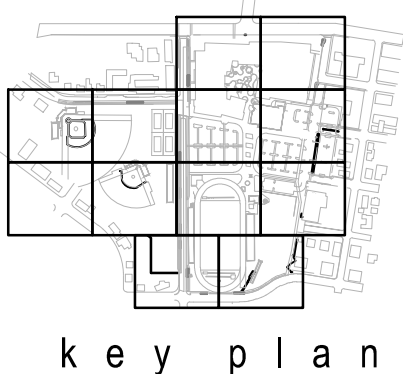
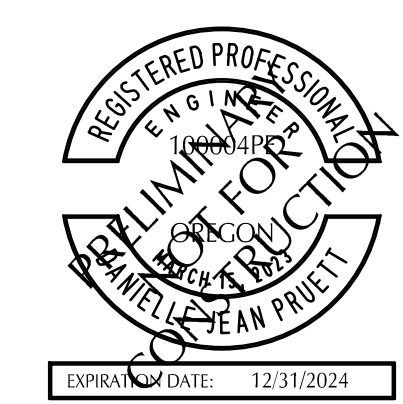
TVFR 100' AERIAL FT

	feet
Width	: 8.00
Track	: 7.70
Lock to Lock Time	: 6.0
Steering Angle	: 39.4

NOTE:
 1. AN ERRC SYSTEM WILL BE INSTALLED IN THE SCHOOL BUILDING. THE ERRC DESIGN WILL BE A DEFERRED SUBMITTAL. TVFRS WILL NEED TO PLAN REVIEW THE ERRC PRIOR TO INSTALLATION. WCCCA (811) WILL NEED TO REVIEW AND APPROVE IT PRIOR TO TVFR APPROVAL. OFC SECTION 510.
 2. PROJECT WILL COMPLY WITH OFC CHAPTER 33 FOR FIRE SAFETY DURING CONSTRUCTION. OFC CHAPTER 33



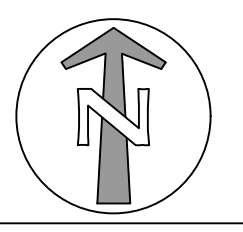
**BEAVERTON HIGH SCHOOL -
 REPLACEMENT**
 13000 SW 2ND ST. BEAVERTON, OR 97005
 BEAVERTON SCHOOL DISTRICT
 T. 503.356.2830



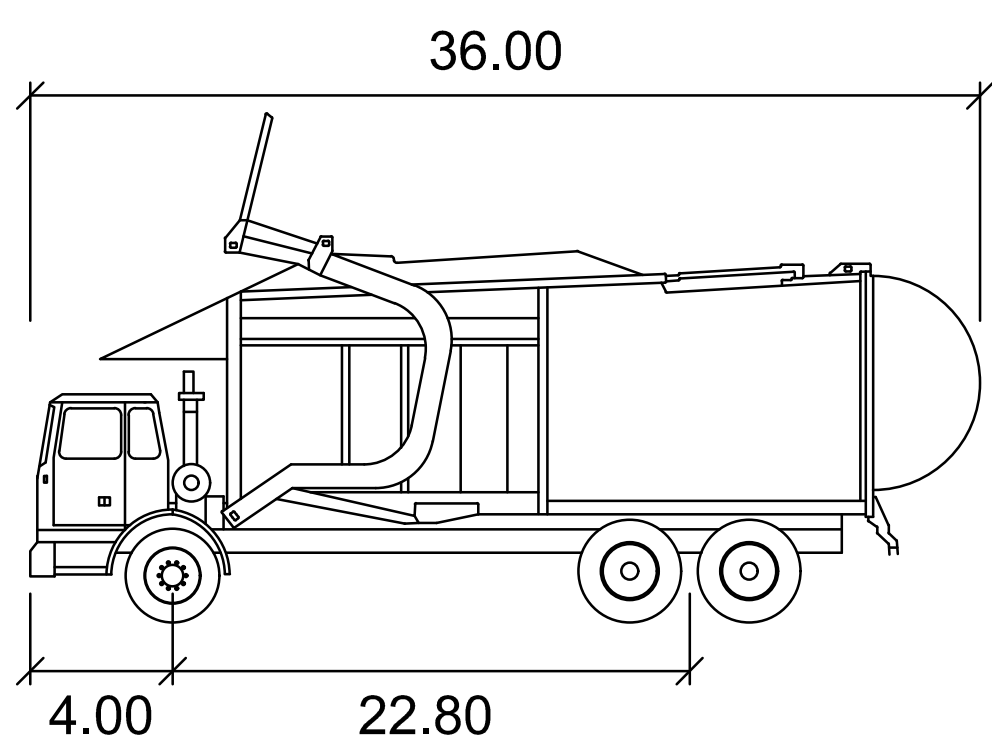
phase SCHEMATIC DESIGN
 date APRIL 1, 2022
 project 21004

FIRE TRUCK TURNING
 MOVEMENTS

N.2

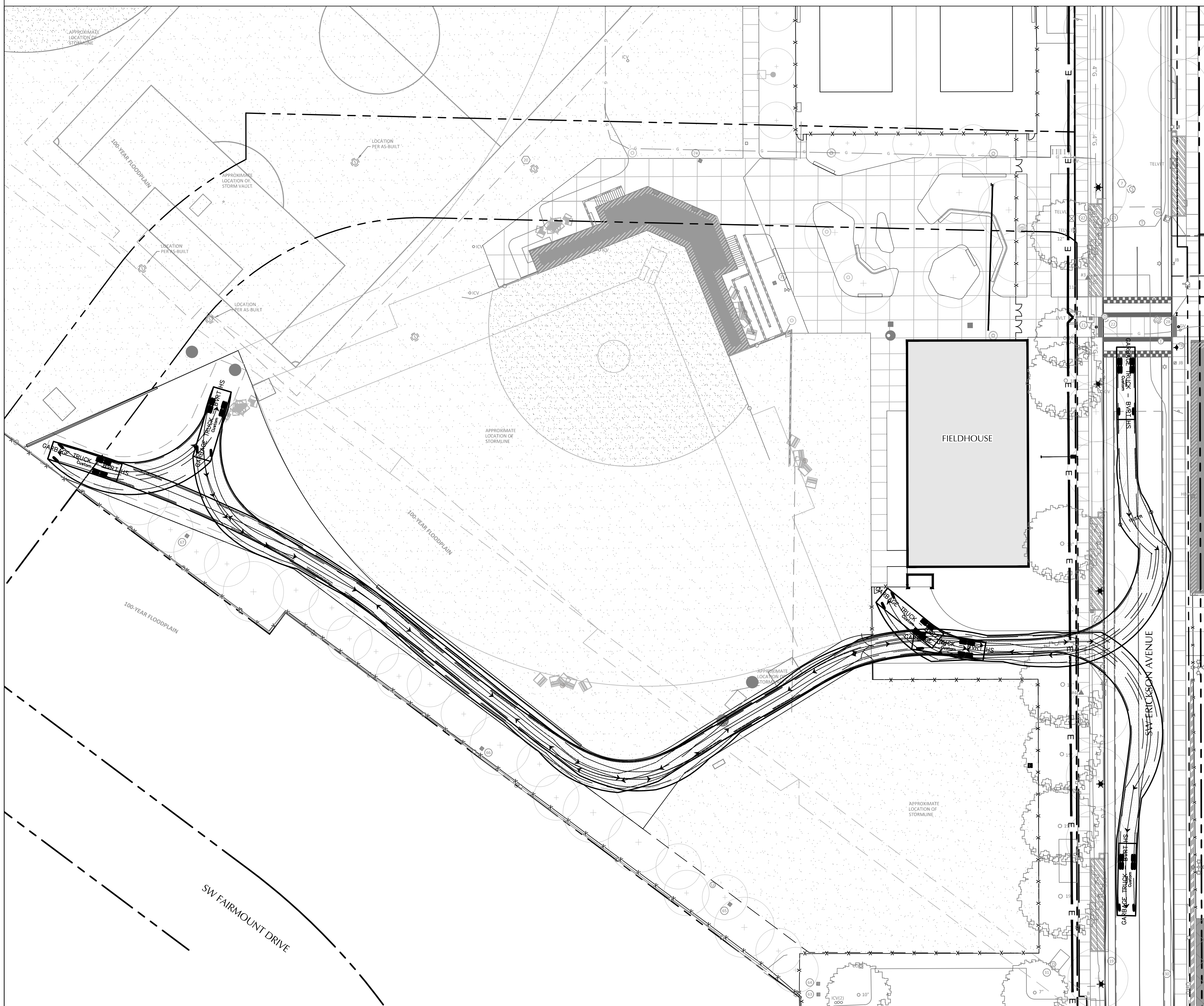


File: \\sbs\1\proj\2021\12\00170-BSD-Beaverton-HS-CAD\PL\DOT\EX\20230420\Turning_Movements.dwg TAB.N.2
 Plotted: 8/23 at 11:54am By: chabackler

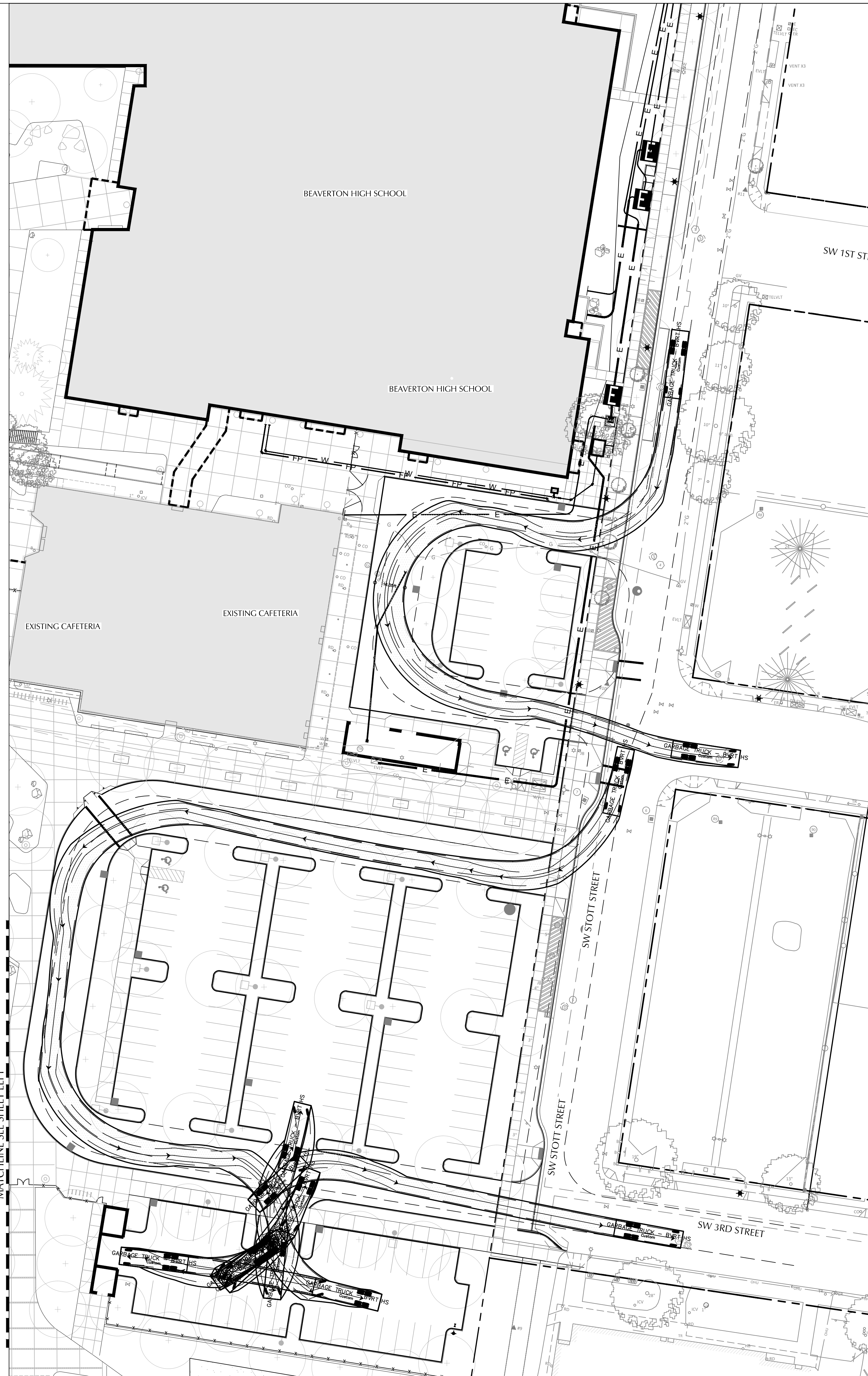


GARBAGE TRUCK - BVRT HS

	feet
Width	: 9.17
Track	: 8.00
Lock to Lock Time	: 6.0
Steering Angle	: 27.0



1 FIELD HOUSE ACCESS
SCALE: 1" = 30'



2 ACCESS EAST
SCALE: 1" = 30'

PRELIMINARY FIRE FLOW

BUILDING SQUARE FOOTAGE = DAY 1 - 336,400 SF
 BUILDING TYPE = TYPE II-B
 FIRE-FLOW PER TABLE B105.1(2)* = 8,000 GPM FOR A DURATION OF 4 HOURS**
 THE MINIMUM FIRE-FLOW SHALL BE MULTIPLIED BY 0.25 PER TABLE B105.2* WHICH PERTAINS TO BUILDINGS OTHER THAN ONE AND TWO FAMILY DWELLINGS, GROUP R-3 AND R-4 BUILDING AND TOWNHOMES

MINIMUM NUMBER OF HYDRANTS PER TABLE C102.1*
 FOR A FIRE FLOW OF 6,000 GPM (75% REDUCTION) = 1500 GPM = 2
 REQUIRED AVERAGE SPACING BETWEEN HYDRANTS = 450 FT
 * REFERENCE 2019 OREGON FIRE CODE
 ** A REDUCTION IN THE REQUIRED FIRE FLOW OF UP TO 75%, BUT NOT LESS THAN 1,500 GPM, IS ALLOWED WITH AN APPROVED AUTOMATIC SPRINKLER SYSTEM AT THE DISCRETION OF THE FIRE MARSHAL.

HYDRANT FLOW TEST INFORMATION

- HYDRANT FLOW TEST CONDUCTED ON 11/10/2022 AT 13000 SW 2ND STREET, BEAVERTON OR 97005 BY INTERFACE ENGINEERING INDICATED THE FOLLOWING INFORMATION:
 - HYDRANT LOCATIONS: NORTHEAST CORNER OF STOTT AVE AND 2ND STREET & STOTT AVENUE, NEAR SCHOOL PARKING LOT OFF 2ND STREET
 - STATIC PRESSURE: 84 PSI
 - RESIDUAL PRESSURE: 76 PSI → CALCULATED FLOW 2,146 GPM
 - AVAILABLE FIRE FLOW AT 20 PSI = 6,596 GPM

SHEET NOTE

FIRE APPARATUS ROADS SHALL BE DESIGNED AND MAINTAINED TO SUPPORT THE IMPOSED LOAD OF FIRE APPARATUS WEIGHING AT LEAST 75,000 POUNDS AND SHALL BE SURFACED WITH ASPHALT, CONCRETE OR OTHER APPROVED DRIVING SURFACE TO PROVIDE ALL WEATHER DRIVING CAPABILITIES. PER THE CONDITIONS OF APPROVAL AND THE 2014 OFC APPENDIX D SECTION D102.1 THE 75,000 POUNDS HAS BEEN ADOPTED THROUGH THE CITY OF BEAVERTON MUNICIPAL CODES. THIS INFORMATION CAN BE FOUND ON THE CITY'S WEB-SITE AND ON THE CITY OF BEAVERTON FIRE DEPARTMENT HANDOUTS.

LEGEND

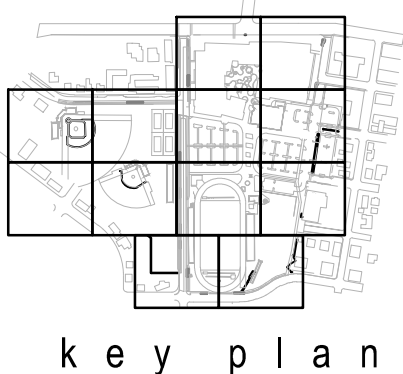
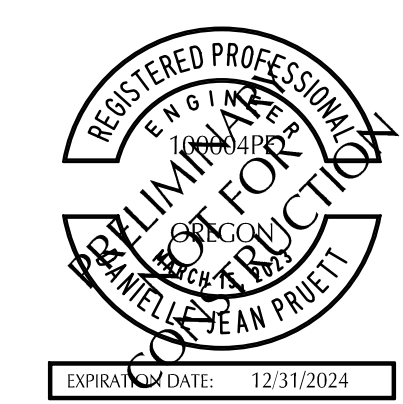
- FIRE DEPARTMENT CONNECTION
- FIRE HYDRANT

PUBLIC FIRE STRUCTURE KEY NOTES

- A EXISTING FIRE DEPARTMENT CONNECTION TO SERVE THE SITE
- B EXISTING FIRE HYDRANT
- C PROPOSED FIRE HYDRANT
- D PROPOSED FIRE DEPARTMENT CONNECTION TO SERVE THE SITE

PRIVATE FIRE ACCESS KEY NOTES

- 1 XX



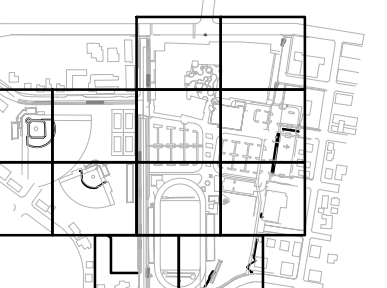
phase	SCHEMATIC DESIGN
date	APRIL 1, 2022
project	21004
OVERALL FIRE ACCESS PLAN	



N.3

File: \\sbs\1\04\Projects\2021\21004\13000 SW 2ND ST BEAVERTON HS\CD\PL\OT\KEY\20230420\Turning_Movements.dwg TAB.N.3
 Plot: 8/1/23 at 11:54am by: schneider

**BEAVERTON HIGH SCHOOL -
REPLACEMENT**
13000 SW 2ND ST. BEAVERTON, OR 97005
BEAVERTON SCHOOL DISTRICT
T 503.356.2830

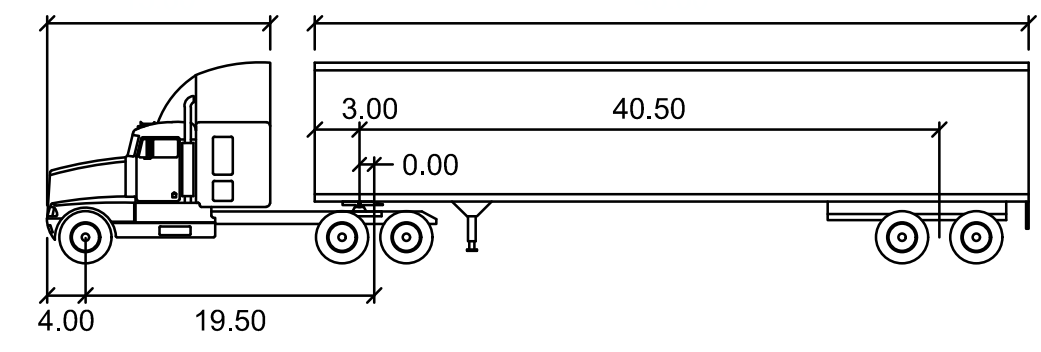


key plan

phase SCHEMATIC DESIGN
date APRIL 1, 2022
project 21004

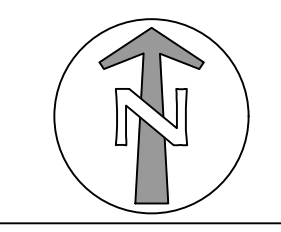
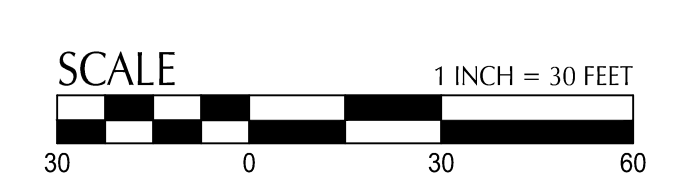
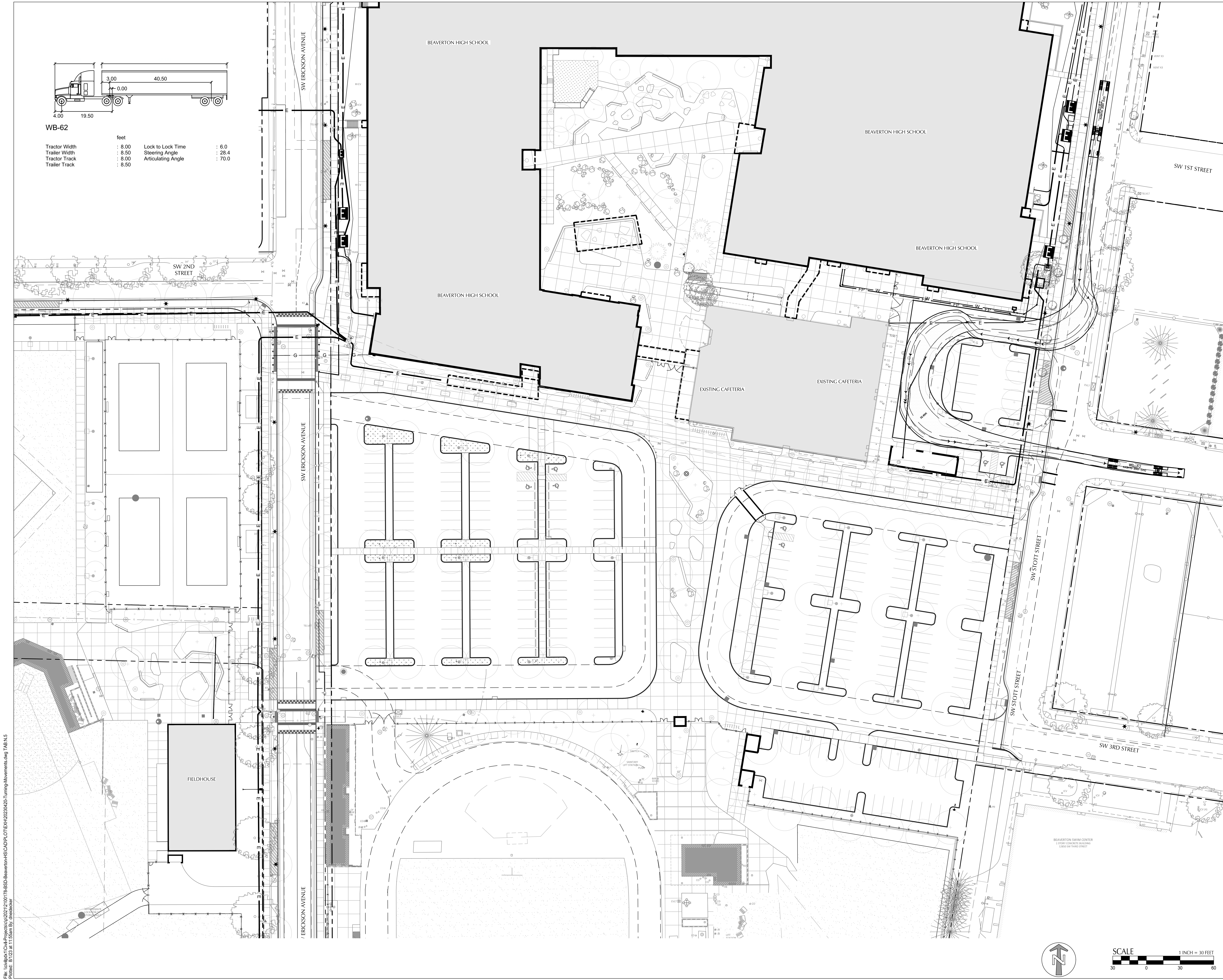
BUS AND WB-67
TURNING MOVEMENTS

N.5



WB-62

feet	
Tractor Width	: 8.00
Trailer Width	: 8.50
Tractor Track	: 8.00
Trailer Track	: 8.50
Lock to Lock Time	: 6.0
Steering Angle	: 28.4
Articulating Angle	: 70.0



File: \\sbs\1\CA\Projects\2021\21004\WB-67\BSD-Beaverton-HS\CD\PL\OT\BY\20230420\Turning_Movements.dwg TAB.N.5
Plotted: 8/23 at 11:55am By: chadwick